



**2710 SCALE KIT**

**MANUAL**



## Introduction

### READ CAREFULLY

This manual is provided to familiarize you with the installation and operation of the 2710 Herd Boss scale kit.

It is the user's responsibility to maintain and operate the 2710 Herd Boss scale kit in a manner that will result in the safest working conditions possible.

In addition, it is also the user's responsibility to be aware of existing Federal, State and Local codes and regulation governing the safe use and maintenance of this product.

**Treat the equipment with respect and service it regularly. This will result in a safer working environment and longer equipment life.**



## Table of Contents

Table of Contents.....	3
Installation Steps.....	4-8
Trouble Shooting .....	9



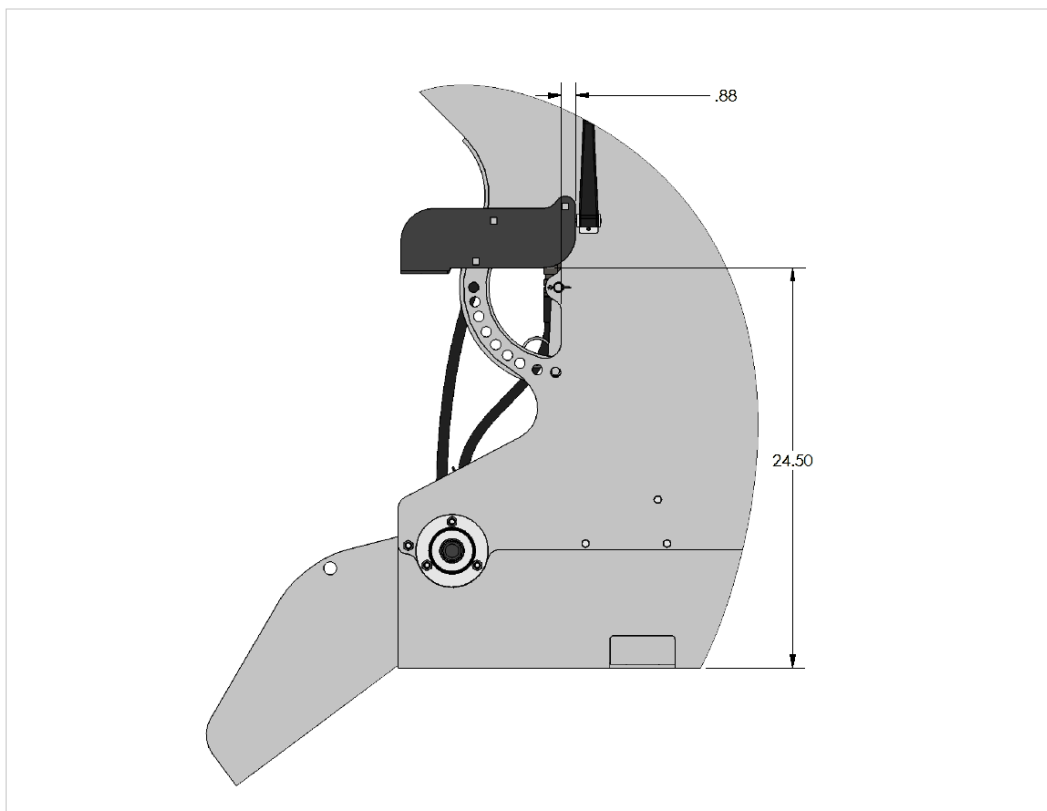
## Installation

### Tools Required:

Marker	25/32" Drill Bit
Tape Measure	7/16" Wrench/Socket
Drill	9/16" Wrench/Socket
1/2" Drill Bit	1-1/8" Wrench/Socket
7/16" Drill Bit	Angle Grinder
Loctite (Red)	

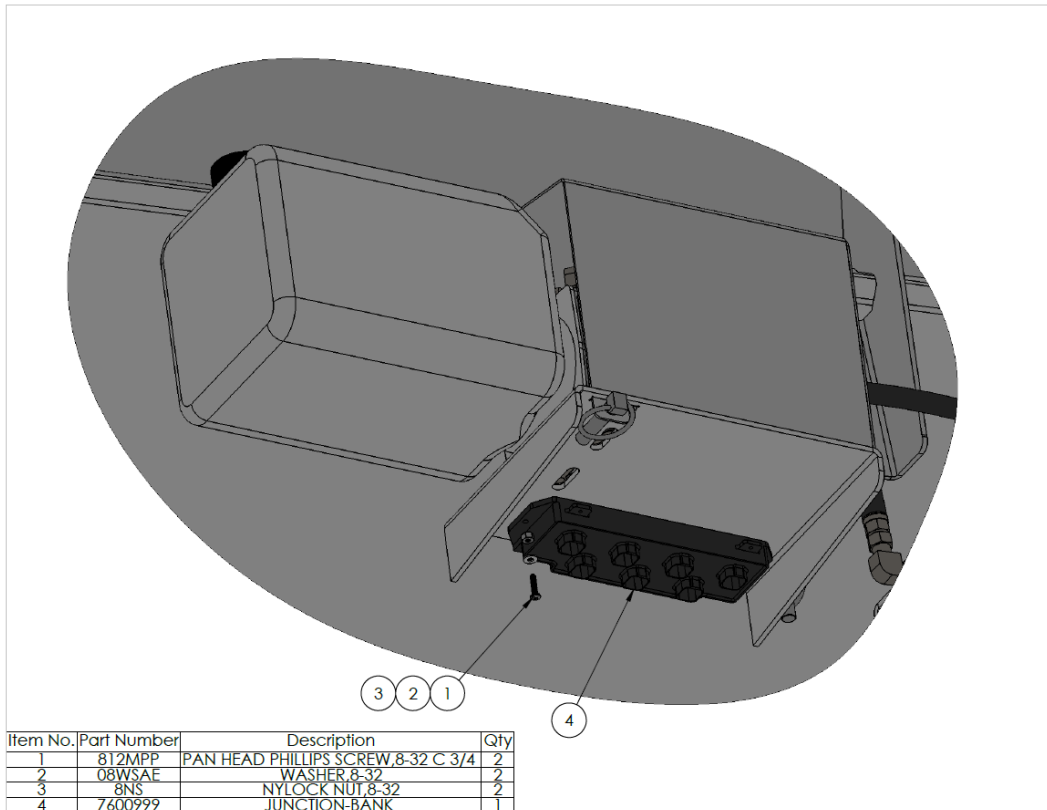
### Steps:

1. Locate the scale-head mounting bracket on the machine using the print below. Mark and drill the holes using a 7/16" drill bit. Bolt the bracket on using three (3) 3/8" x 1-1/4" carriage bolts and three (3) 3/8 nylock nuts.

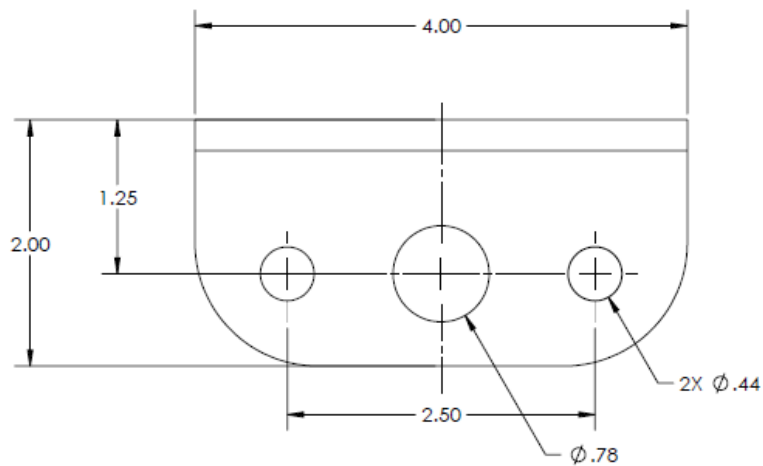




2. Locate the j-box in place under the hyd. Power unit bracket. Mark the mounting holes. Remove the j-box and drill two (2) 1/2" holes. Mount the j-box into place using the adhesive tape on the back and the #8 pan head screws. (The elec/hyd pump may need to be loosened in order to bolt-on the j-box.)

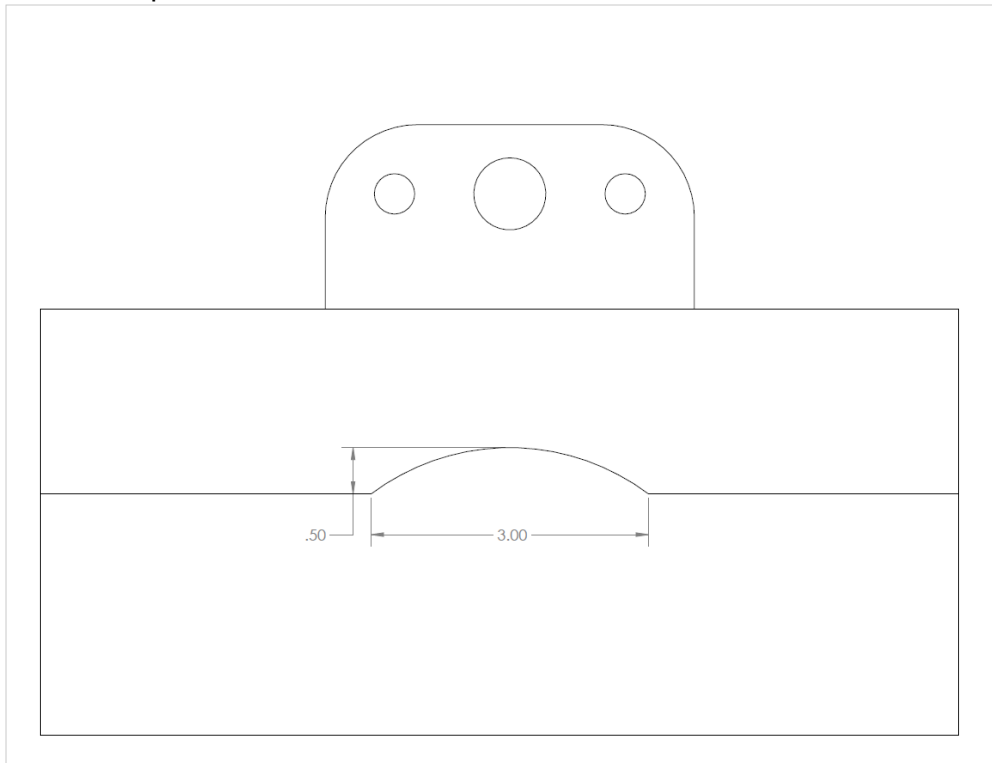


3. Per the print below, enlarge the existing center hole to 25/32" and drill two (2) 7/16" holes on the four (4) mounting feet.

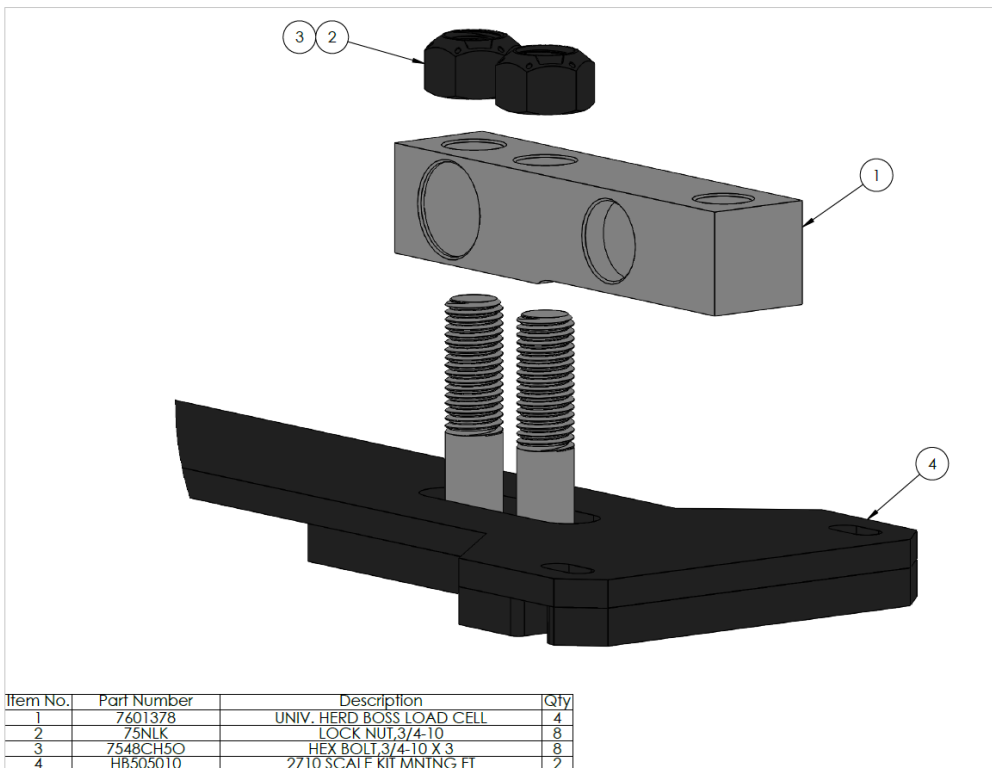




4. Using an angle grinder, grind a notch in the bottom channel of the feeder base adjacent to each mounting foot. Per the print below.

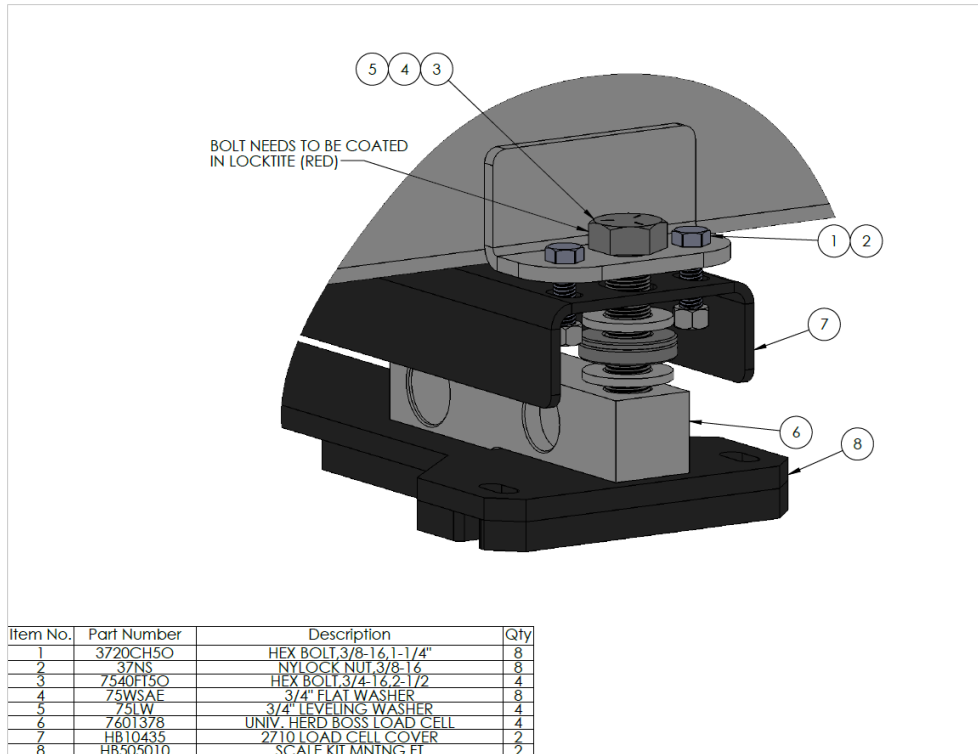


5. Bolt the loadcells to each of the feet. Leave loose to allow the loadcell to slide freely. (Tighten at final assembly)

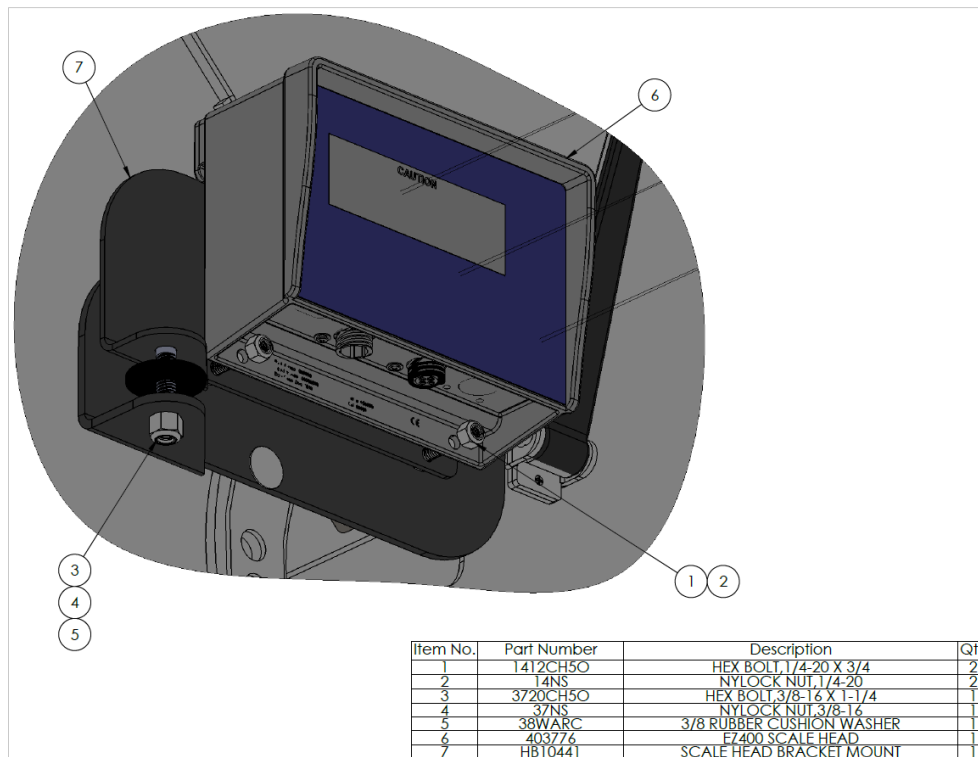




6. Bolt the loadcell covers to the feeder. Install loadcell and mounting foot from *Step 5*. Leave a 1/16" gap between the washer and the loadcell cover. The foot pad should be able to move freely – if it is too tight the loadcells will not weigh correctly. Tighten the bolts from *Step 5*.

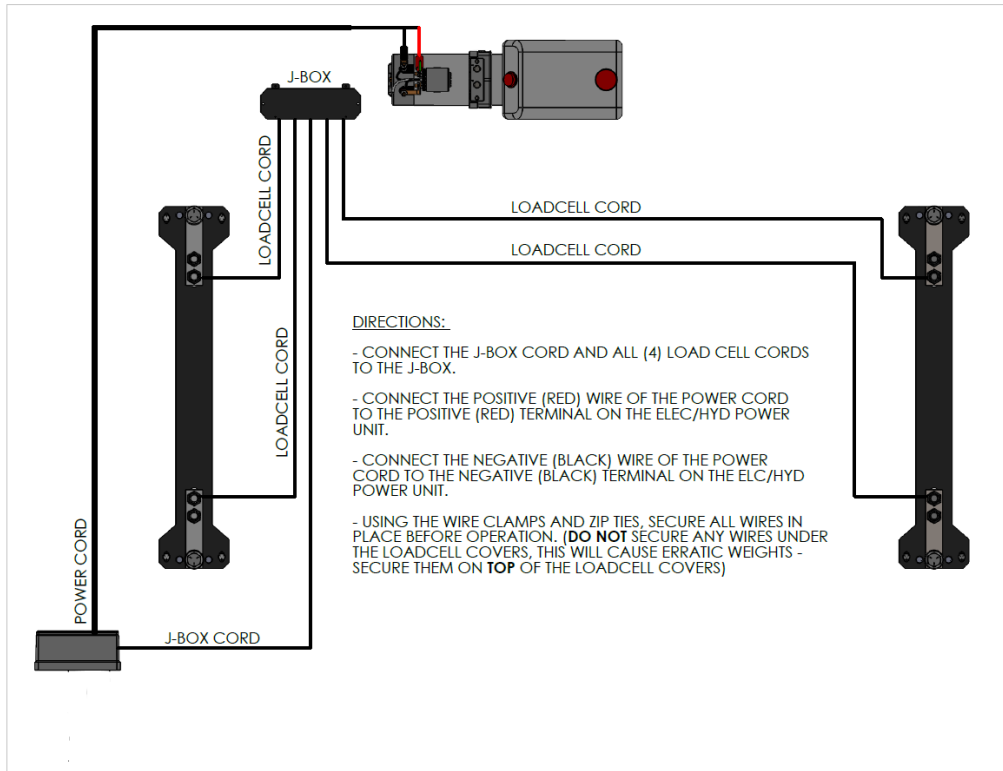


7. Mount the scale head and the bracket onto the machine. See picture below. (Tip: Hook the scale head over the back of the mounting bracket before putting the 1/4" bolts through the holes.)





8. Connect all wires and secure them. (See picture below.)



9. Calibrating the scale head.

- See the instruction book that came with the scale head for how to calibrate the scale head.





## Troubleshooting Guide

**\*\*All bars need to weigh accurately before it will be beneficial to recalibrate your indicator\*\***

### Experiencing inaccurate weights?

- 1) Measure the same person, or a 200 pound bag of seed, on each of the weigh bars.
  - If one weighs negative, turn that weigh bar over. (An upside down bar will weigh negative.)
  - If one side is weighing 20% light, check for an obstruction. Is anything binding or any metal rubbing?

**\*Could be a faulty weigh bar**

- If they are all even weights, but are weighing light or heavy, we need to adjust the calibration. If your scale is more than 5% off, call us for help, as your scale may have had the wrong calibration number put in it from the factory. 319-462-2344.

The hopper being weighed needs to be at least  $\frac{3}{4}$  full for us to adjust calibration.

Check operator's manual or give us a call at 1-888-962-2344.

### Experiencing erratic weights?

The following process needs to occur in an effort to eliminate one part at a time in an effort to find the problem! When you reconnect the faulty part you will have erratic readings again.

- 1) Disconnect the junction box cord from the indicator marked "load cells". The indicator should stabilize after 45 seconds. Try to zero out the indicator. IF the indicator won't zero out, the indicator is the problem.

IF it will zero out:

- 2) Connect the junction box back to the indicator. And then disconnect all of the load cells from the junction box.
- 3) Zero out the indicator. IF the indicator won't zero out the problem is the junction box or the junction box cable.

IF it will zero out:

- 4) Reconnect the load cells ONE AT A TIME, zeroing out the indicator each time. When you reconnect the faulty load cell, you will have erratic readings again.